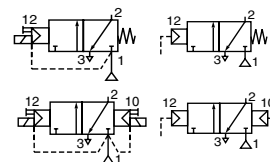




SPOOL VALVES

pilot operated or air operated, spool type
single/dual solenoid or air (mono/bistable function)
aluminium body, 1/4 to 1/2



3/2

Series

551

552-553

FEATURES

- ASCO/JOUCOMATIC solenoid valves satisfy all relevant EC Directives
- The monostable spool valves 551 series, without manual operator, have TÜV certified IEC 61508 Functional Safety data and can be used up to SIL-4/AK-7
- The spool valves 3/2 NC have threaded port connections
- All the exhaust ports of this spool valve are pipable, providing better environmental protection, particularly recommended for sensitive areas such as clean rooms, and applications in the pharmaceutical and food processing sectors
- The valves offer environmental protection against the ingress of liquids, dusts or any other foreign matter (environmental-protected construction)
- Epoxy moulded coil for general service applications

GENERAL

Differential pressure 2 - 10 bar [1 bar = 100 kPa]
Flow (Qv at 6 bar) 1/4 = 860 l/min (ANR)
 3/8 = 3000 l/min
 1/2 = 3800 l/min

fluids (*)	temperature range (TS)	seal materials (*)
air, inert gas, filtered	-25°C to +60°C	NBR (nitrile) + PUR (polyurethane)

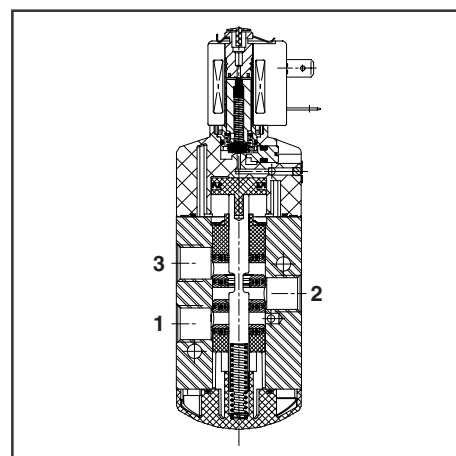
MATERIALS IN CONTACT WITH FLUID

(*) Ensure that the compatibility of the fluids in contact with the materials is verified

Body Aluminium, black anodized
End covers Glass-filled polyamide
Internal parts Zamak, stainless steel, acetal (POM), aluminium
Sealing NBR + PUR
Core and core tube Stainless steel
Shading coil Copper

ELECTRICAL CHARACTERISTICS

Coil insulation class F
Connector specification DIN 43650, 11 mm, industry, standard B (type 01) or ISO 4400 (type 02)
Connector Spade plug (cable Ø 6-8 mm or Ø 6-10 mm)
Electrical safety IEC 335
Standard voltages DC (=) : 24V
 AC (~) : 24V - 115V - 230V / 50 Hz
 (Other voltages and 60 Hz on request)



prefix option	power ratings				operator ambient temperature range (TS) (°C)	safety code	electrical enclosure protection (EN 60529)	replacement coil		type (1)
	inrush ~ (VA)	holding ~ (VA)	hot/cold = (W)					230 V / 50 Hz	24 V DC	
			(W)	(W)						
SC	15	7	5	5/6,9	-25 to +60	EN 60730	moulded IP65	43004649	43004647	02
SCDU	15	7	5	5/6,9	-25 to +60	II 3 D IP65 T 135°C	moulded IP65	-	-	02
PV	-	-	4	-/6,9	-40 to +65/40	II 2G/D EEx m IIC T3(AC-DC)	moulded IP65	-(2)	-(2)	04
PV	9	5	4	3,5/4,0	-40 to +60	II 2G/D EEx m IIC T4(AC)/T5(DC)	moulded IP65	-(2)	-(2)	03
SC	6	3,5	2,5	2,5/3,0	-25 to +60	EN 60730	moulded IP65	43004886	43004869	01
SCDU	6	3,5	2,5	2,5/3,0	-25 to +60	II 3 D IP65 T 100°C	moulded IP65	-(2)	-(2)	01

PILOT OPERATED SPECIFICATIONS

pipe size	orifice size	flow coefficient Kv		operating pressure differential (bar)			type (1)	prefix optional solenoids					catalogue number
				min.	max. (PS)			ATEX/CENELEC					
					air (*)			EEx d	EEx em	EExm	EEx i	3D IP65	
(G)	(mm)	(m³/h)	(l/min)	~	=	~/=				PV		SCDU	
Solenoid air pilot operated - spring return (monostable)													
1/4	6	0,75	12,5	2	10	10	03/01	-	-	●	-	●	SC G551A005
3/8	12	2,49	41,5	2	10	10	04/02	-	-	●	-	●	SC G552A005
1/2	13	3,15	52,5	2	10	10	04/02	-	-	●	-	●	SC G553A005
Solenoid air pilot operated and return (bistable)													
1/4	6	0,75	12,5	2	10	10	03/01	-	-	●	-	●	SC G551A006
3/8	12	2,49	41,5	2	10	10	04/02	-	-	●	-	●	SC G552A006
1/2	13	3,15	52,5	2	10	10	04/02	-	-	●	-	●	SC G553A006
Solenoid air pilot operated - spring return (monostable), certified IEC 61508 Functional Safety data													
1/4	6	0,75	12,5	2	10	10	03/01	-	-	●	-	●	SC G551A005 SL

● Available feature

(1) Refer to the dimensional drawings on page 2. (Air operated versions, refer to the "Pilot Valves for the Process Industry" catalogue).

(2) Multiple coil-kits available under ATEX, consult ASCO/JOUCOMATIC.



All leaflets are available on: www.ascojoucomatic.com

V607-GB-R6

AIR OPERATED AND ADDITIONAL OPTIONS

- Versions: pneumatic operated, spring return - codes **G551A105** (1/4); **G552A105** (3/8); **G553A105** (1/2)
dual pneumatic operated, air return - codes **G551A106** (1/4); **G552A106** (3/8); **G553A106** (1/2)
- Other pipe threads are available on request (For NPT ANSI 1.20.3, refer to the "Pilot Valves for the Process industry" catalogue)
- EEx m (Prefix "PV") execution can be supplied in various cable lengths
- Dustproof ATEX (Prefix "SCDU") with a coil and spade plug connector with lead (2 m lead), **TPL 20651**
- Compliance with "UL" standard is available on request
- Magnetic latch execution for 551 series, TPL 20649
- Suffix available: **GD** (air operated only, ATEX 2G/D c); **MS** (screw type manual operator; Not use with SL suffix);
- Supply rail for "n" solenoid spool valves, 551/553 series, mounting angle brackets (refer to the "Pilot Valves for the Process industry" catalogue)
- Plug with visual indication and with peak voltage suppression or with cable length of 2m (see section 11)

INSTALLATION

- The solenoid valves and air operated valves can be mounted in any position without affecting operation
- It is necessary to connect pipes or fittings to the exhaust ports to protect the internal parts of the spool valve and its pneumatic operator if used outside or in harsh environments (dusts, liquids etc.)
- IEC 61508 Functional Safety (Suffix SL), permissible temperature range: -40°C to +60°C. Probability of failure, consult ASCO/JOUCOMATIC
- Valves with suffix "SL" should be provided with a specific exhaust protector
- Threaded pipe connection identifier is G = G (ISO 228/1)
- Installation/maintenance instructions are included with each valve

SPARE PARTS KIT & ACCESSORIES

catalogue number	spare parts kit no.		exhaust protector	
	~	=	bronze	stainless steel
G551....	-	-	(G1/8) 97701875	34600418 (2)
G551....	-	-	(G1/4) 97701876	34600419 (2)
G552....	-	-	(G3/8) 34600478	-
G553....	-	-	(G1/2) 34600479	-

- Not available

(1) Consult the "Pilot Valves for the Process Industry" catalogue.

(2) Provide with "SL" suffix according to the operator versions.

ORDERING EXAMPLES:

SC	G 551 A 005 MS	230V / 50 Hz
SCDU	G 551 A 006	115V / 50 Hz
PV	G 551 A 006	115V / 50 Hz
SC	G 551 A 005 SL	24V / DC
	G 553 A 106	
	G 553 A 106 GD	
	G 553 A 105 GDSL	

prefix: SC, SCDU, PV, SC
 pipe thread: G 551, G 553
 basic number: A 005, A 006, A 106, A 105
 voltage: 230V / 50 Hz, 115V / 50 Hz, 24V / DC
 suffix: MS, SL, GD, GDSL

DIMENSIONS (mm), WEIGHT (kg), PILOT OPERATED



TYPE 01

Prefix "SC" and "SCDU" Solenoids
Epoxy moulded
IEC 335 / 3 x DIN 46244 - IP65
II 3 D IP65 T 85°C to T 135°C



TYPE 02

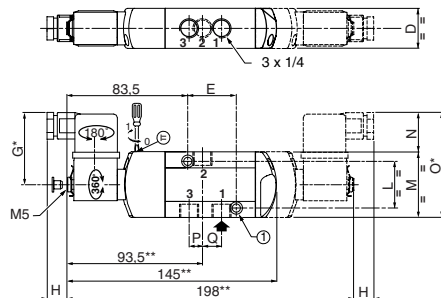
Prefix "SC" and "SCDU" Solenoids
Epoxy moulded
IEC 335 / ISO 4400 - IP65
II 3 D IP65 T 85°C to T 135°C



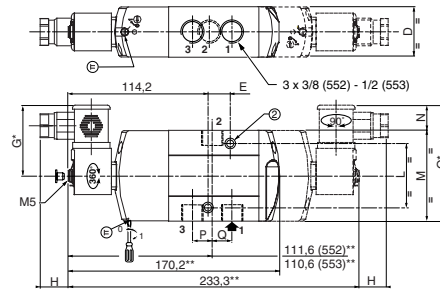
TYPE 03

Prefix "PV" Solenoid
Epoxy encapsulated
2 m lead with 3 cores, length 2 m
EN 50028
II 2 G/D EEx m II

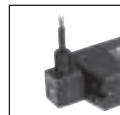
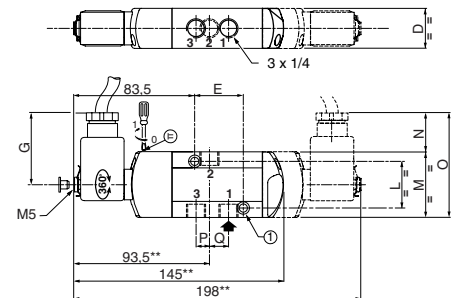
551A005 / A005 MS / A005 SL / A006 / A006 MS



552A005 / A005 MS / A006 / A006 MS 553A005 / A005 MS / A006 / A006 MS



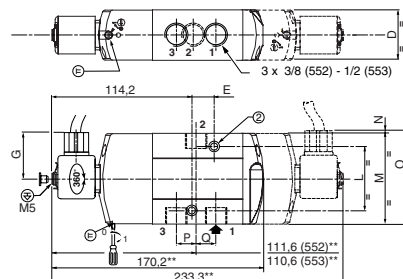
551A005 / A005 MS / A005 SL / A006 / A006 MS



TYPE 04

Prefix "PV" Solenoid
Epoxy encapsulated
2 m lead with 3 cores, length 2 m
EN 50028
II 2 G/D EEx m II

552A005 / A005 MS / A006 / A006 MS 553A005 / A005 MS / A006 / A006 MS



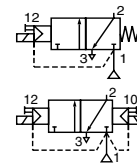
① 2 mounting holes 5.3 mm dia.; Spotfacing: 9 mm dia., depth 5 mm

② 2 mounting holes 6.5 mm dia.; Spotfacing: 11 mm dia., depth 6 mm

* + 15 mm for connector removal ** + 35 mm for coil removal

type	prefix option	D	E	G	H	L	M	N	O	P	Q	weight ⁽¹⁾	
												monost.	bistable
01 (551)	SC/SCDU	27,5	33	49	13	32	45	27	72	9,5	12	0,33	0,45
02 (552)	SC/SCDU	40,2	16	56,2	21,8	51	72,3	20	92,3	12,1	17,5	0,70	1,00
02 (553)	SC/SCDU	40,2	16	56,2	21,8	51	72,3	20	92,3	12,1	19,5	0,69	0,99
03 (551)	PV	27,5	33	43,5	13	32	45	21	72	9,5	12	0,37	0,49
04 (552)	PV	40,2	16	36,5	21,8	51	72,3	0,3	92,3	12,1	17,5	0,73	1,03
04 (553)	PV	40,2	16	36,5	21,8	51	72,3	0,3	92,3	12,1	19,5	0,72	1,02

⁽¹⁾ Incl. coil(s) and connector(s), 01 and 02 types



FEATURES

- ASCO/JOUCOMATIC solenoid valves satisfy all relevant EC Directives
- The monostable spool valves 551 series, without manual operator, have TÜV certified IEC 61508 Functional Safety data and can be used up to SIL-4/AK-7
- The 3/2 NC solenoid operated spool valves have threaded port connections
- All the exhaust parts of this spool valve are pipable, providing better environmental protection, particularly recommended for sensitive areas such as white rooms, and applications in the pharmaceutical and food processing sectors
- The valves offer environmental protection against the ingress of liquids, dusts or any other foreign matter (environmental-protected construction)
- Possibility of external air pilot supply

GENERAL

Differential pressure 2 - 10 bar [1 bar = 100 kPa]
Flow (Qv at 6 bar) 1/4 = 860 l/min (ANR)
 3/8 = 3000 l/min
 1/2 = 3800 l/min

fluids (*)	temperature range (TS)	seal materials (*)
air, inert gas, filtered	-25°C to +60°C	NBR (nitrile) + PUR (polyurethane)

MATERIALS IN CONTACT WITH FLUID

(*) Ensure that the compatibility of the fluids in contact with the materials is verified

	ASCO solenoid interface
Body	Aluminium, black anodized
End cover (spring)	Glass-filled polyamide
Spool valve internal parts	Zamak, st. steel, acetal (POM), aluminium
Pilot internal parts	Refer to specific solenoid catalogue pages
Pilot end-covers	Aluminium
Core tube, core spring	Stainless steel
Core and plunger	Stainless steel
Sealings & discs	NBR
Top disc	PA (nylon)
Disc holder, seat	CA (Acetal)
Seat	Brass
Shading coil	Copper

ASCO SOLENOID INTERFACE ELECTRICAL CHARACTERISTICS

Coil insulation class F
Connector Spade plug (cable Ø 6 - 10 mm)
Connector specification ISO 4400
Electrical safety IEC 335
Standard voltages DC (=) : 24V
 AC (~) : 24V - 115V - 230V / 50 Hz
 (Other voltages and 60 Hz on request)

prefix option	power ratings				operator ambient temperature range (TS) (°C)	safety code	electrical enclosure protection (EN 60529)	replacement coil		type (1)
	inrush ~ (VA)	holding ~ (VA) (W)		hot/cold = (W)				230 V / 50 Hz	24 V DC	
		~ (VA)	(W)							
SC	55	23	10,5	9/11,2	-40 to +60	EN 60730	moulded IP65	400-425-117	400-425-142	01
SCDU	55	23	10,5	9/11,2	-40 to +75	II 3D IP65 T 100°C to T 200°C	moulded IP65	- (2)	- (2)	01
NF	55	23	10,5	9/11,2	-40 to +60	II 2G/D EEx d IIC T4(AC)/T5(DC)	aluminium IP65	400-405-117	400-405-142	02
NK	55	23	10,5	9/11,2	-40 to +50/60	II 2G/D EEx d IIB+H ₂ T4(AC/DC)	aluminium IP65	400-405-117	400-405-142	03
EM	55	23	10,5	9/11,2	-40 to +40	II 2G/D EEx em II T3	steel IP67	400-909-117	400-913-142	04
PV	55	23	10,5	9/11,2	-40 to +65	II 2G/D EEx m II T3(AC)/T4(DC)	moulded IP65	- (2)	- (2)	05
ZN	55	23	10,5	9/11,2	-40 to +50	II 3G/2D EEx nA T3	moulded IP65	- (2)	- (2)	01

ASCO SOLENOID INTERFACE SPECIFICATIONS

pipe size	orifice size	flow coefficient Kv		operating pressure differential (bar)				type (1)	prefix optional solenoids						catalogue number		
				min.	max. (PS)				-	ATEX/CENELEC							
					air (*)					-	EEx d	EEx em	EEx m	EEx nA		3D IP65	
(G)	(mm)	(m³/h)	(l/min)	~	=	~	=	~/=	-						NF		NK
Solenoid air pilot operated - spring return (monostable)																	
1/4	6	0,75	12,5	2	10	10	10	02/03/04/05/01	-	●	●	●	●	●	●	●	SC G551B405
3/8	12	2,49	41,5	2	10	10	10	02/03/04/05/01	-	●	●	●	●	●	●	●	SC G552A405
1/2	13	3,15	52,5	2	10	10	10	02/03/04/05/01	-	●	●	●	●	●	●	●	SC G553A405
Solenoid air pilot operated and return (bistable)																	
1/4	6	0,75	12,5	2	10	10	10	02/03/04/05/01	-	●	●	●	●	●	●	●	SC G551B406
3/8	12	2,49	41,5	2	10	10	10	02/03/04/05/01	-	●	●	●	●	●	●	●	SC G552A406
1/2	13	3,15	52,5	2	10	10	10	02/03/04/05/01	-	●	●	●	●	●	●	●	SC G553A406
Solenoid air pilot operated - spring return (monostable), certified IEC 61508 Functional Safety data																	
1/4	6	0,75	12,5	2	10	10	10	02/03/04/05/01	-	●	●	●	●	●	●	●	SC G551B405 SL

● Available feature (1) Refer to the dimensional drawings on page 4. (2) Multiple coil-kits available under ATEX, consult ASCO/JOUCOMATIC.

ADDITIONAL OPTIONS

- Valves configured for external pilot air supply with ASCO solenoid interface, TPL 20547
- Other pipe threads are available on request (For NPT ANSI 1.20.3, refer to the "Pilot Valves for the Process industry" catalogue)
- Other préfixes available according to "ATEX/CENELEC, refer to the "Pilot Valves for the Process industry" catalogue
- EEx m (Prefix "PV") execution can be supplied in various cable lengths
- Compliance with "UL" and "CSA" standard is available on request
- Coil insulation class H for max. ambient temperature +80°C (only series 551), prefix "SCHT"
- 1/2" NPT (prefix "T") and M20 x 1.5 (prefix "ET") conduits (aluminium or 316 SS) available for steel solenoid housing
- Suffix available (Not use with SL suffix): **MO** (impulse or locking type manual operator, push-turn)
- Plug with visual indication and with peak voltage suppression or with cable length of 2m (see section 11)

INSTALLATION

- The solenoid valves can be mounted in any position without affecting operation
- It is necessary to connect pipes or fittings to the exhaust ports to protect the internal parts of the spool valve and its pneumatic operator if used outside or in harsh environments (dusts, liquids etc.)
- IEC 61508 Functional Safety (Suffix SL), permissible temperature range: -40°C to +60°C. Probability of failure, consult ASCO/JOUCOMATIC
- Threaded pipe connection identifier is G = G (ISO 228/1)
- EEx d (prefix "NF") enclosure is provided with a 1/2" NPT threaded entry hole (M20 x 1,5 (prefix "ET") optional) and is supplied without cable gland
- EEx d (prefix "NK") enclosure is provided with a 3/4" NPT threaded entry hole (1/2" NPT (prefix "T") or M20 x 1,5 (prefix "ET") optional) and is supplied without cable gland
- EEx em (prefix "EM") execution: solenoid enclosure has a cable gland with integral strain relief for cables with an o.d. from 7 to 12 mm and is provided with an internal and external connection facility for an earthing or bonding conductor
- Valves with suffix "SL" should be provided with of the specific exhaust protectors
- Installation/maintenance instructions are included with each valve

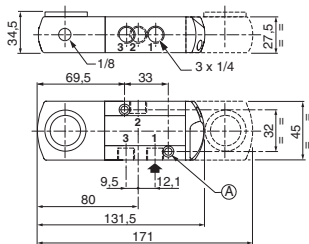
SPARE PARTS KIT & ACCESSORIES

(See page 2)

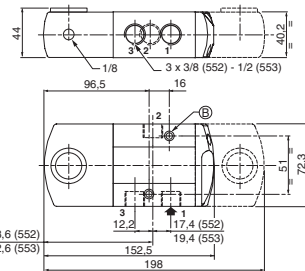
DIMENSIONS (mm), WEIGHT (kg)



Series 551



Series 552-553



Ⓐ 2 mounting holes 5.3 mm dia.;
Spotfacing: 9 mm dia., depth 5 mm

Ⓑ 2 mounting holes 6.5 mm dia.;
Spotfacing: 11 mm dia., depth 6 mm

ORDERING EXAMPLES:

	SC	G 551	B 405	230V / 50 Hz
	SC	G 551	B 405SL	230V / 50 Hz
	SC	G 551	B 406MO	230V / 50 Hz
	SCHT	G 551	B 406MO	230V / 50 Hz
	EM	G 552	A 406MO	230V / 50 Hz

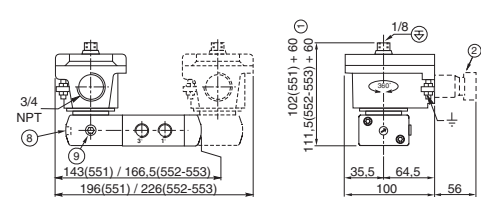
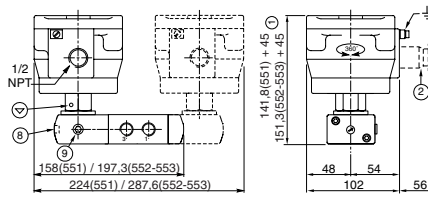
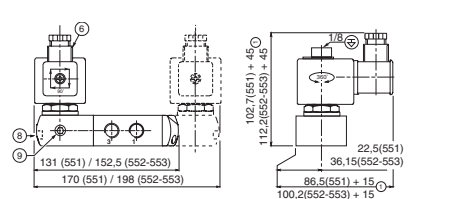
prefix pipe thread basic number voltage suffix

- ① Extra length for disassembly, depending on model
- ② EEx d certified cable gland (on request)
- ③ Three-core cable, length 2 m
- ④ Cable gland for unarmoured cable with 7 to 12 mm dia. sheath
- ⑥ Connector rotatable by 90° increments, Pg 11P (Ø6 - 10 mm)
- ⑧ Impulse or locking (push/turn) type manual operator, suffix MO
- ⑨ External pilot air supply, 1/8 pipe size
- ⊕ Connectable pilot exhaust port
- ⊖ Non-connectable pilot exhaust port

TYPE 01
Prefix "SC", "ZN" and "SCDU" Solenoids
Epoxy moulded
IEC 335 / ISO 4400
EN 50021 (ZN)
IP65 / II 3G/2D EEx nA (ZN)
II 3 D IP65 T 100°C to T 200°C (SCDU)

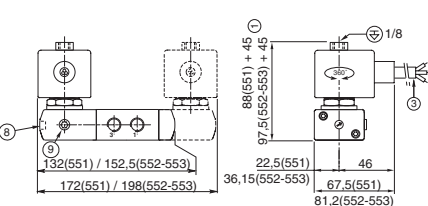
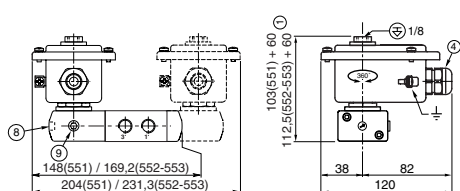
TYPE 02
Prefix "NF" Solenoid
Aluminium; epoxy coated
EN50018
II 2 G/D EEx d IIC

TYPE 03
Prefix "NK" Solenoid
Aluminium; epoxy coated
EN50018
II 2 G/D EEx d IIB + H2



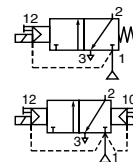
TYPE 04
Prefix "WP", "WPDU" and "EM" Solenoids
Metal; epoxy coated
IEC 335 / EN50019 and EN50028
IP67 / II 2 G/D EEx em II

TYPE 05
Prefix "PV" Solenoid
Epoxy encapsulated
EN50028
II 2 G/D EEx m II



type	prefix option	weight ⁽¹⁾					
		monostable			bistable		
		551	552	553	551	552	553
01	SC/SCDU/ZN	0,76	1,45	1,35	1,34	2,01	1,91
02	NF	1,85	2,49	2,39	3,51	4,15	4,05
03	NK	1,02	1,97	1,87	1,84	2,53	2,43
04	EM	0,84	1,46	1,36	1,49	2,03	1,93
05	PV	0,82	1,46	1,36	1,45	2,02	1,92

⁽¹⁾ Incl. coil(s) and connector(s), 01 type



FEATURES

- ASCO/JOUCOMATIC solenoid valves satisfy all relevant EC Directives
- The monostable spool valves 551 series, without manual operator or with impulse manual operator, have TÜV certified IEC 61508 Functional Safety data and can be used up to SIL-4/AK-7
- The 3/2 NC solenoid operated spool valves have threaded port connections
- All the exhaust ports of this spool valve are pipable, providing better environmental protection, particularly recommended for sensitive areas such as white rooms, and applications in the pharmaceutical and food processing sectors
- The valves offer environmental protection against the ingress of liquids, dusts or any other foreign matter (environmental-protected construction)

GENERAL

Differential pressure 2 - 10 bar [1 bar = 100 kPa]
Flow (Qv at 6 bar) 1/4 = 860 l/min (ANR)
3/8 = 3000 l/min
1/2 = 3800 l/min

fluids (*)	temperature range (TS)	seal materials (*)
air, inert gas, filtered	-25°C to +60°C	NBR (nitrile) + PUR (polyurethane)

MATERIALS IN CONTACT WITH FLUID

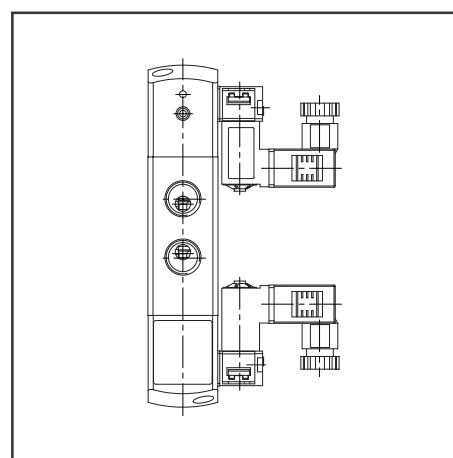
(*) Ensure that the compatibility of the fluids in contact with the materials is verified

CNOMO solenoid (pilot) interface

Body Aluminium, black anodized
End cover (spring) Glass-filled polyamide
Spool valve internal parts Zamak, st. steel, acetal (POM), aluminium
Pilot internal parts Size 30 (E06.05.80), refer to catalogue pages (section 10):
374 pilot (CTNK prefix) and 195 pilot (ISSC prefix)
Size 15 (E06.36.120N), refer to catalogue pages:
302 pilot (CFSC prefix, section 05)
Pilot end-covers Aluminium

CNOMO SOLENOID (PILOT) INTERFACE ELECTRICAL CHARACTERISTICS

Coil insulation class F
Connector Spade plug (cable Ø 6 - 10 mm)
Connector specification ISO 4400
Electrical safety IEC 335
Standard voltages DC (=) : 24V
AC (~) : 24V - 115V - 230V / 50 Hz
(Other voltages and 60 Hz on request)



prefix option	safety parameters				
	U _i [= (DC)] (V)	I _i (mA)	P _i (W)	L _i (µF)	C _i (mH)
ISSC	28	115	1,6	0	0
-	-	-	-	-	-

prefix option	power ratings				operator ambient temperature range (TS) (°C)	safety code	electrical enclosure protection (EN 60529)	replacement coil		type (1)
	inrush ~ (VA)	holding ~ (VA)	hot/cold (W)	= (W)				230 V / 50 Hz	= 24 V DC	
CTNK	55	23	10,5	9/11,2	-20 to +50/60	II 2G/D EEx d IIB+H2 T4(AC/DC) EN 60730	aluminium IP65	- (4)	- (4)	01
CFSC	1,5	1,35	1,3	1/1,2	-15 to +50	II 2G/D EEx ia IIC T6	moulded IP65	-	-	03
ISSC (2)(3)	-	-	-	1,6	-40 to +50		moulded IP65	-	-	02
-	-	-	-	-	-		-	-	-	-

(2) Min. operating current (I_{min}): 0,037 A (3) Intrinsically safe pilot: Check the electrical characteristics in the corresponding catalogue pages (ISSC: 195 pilot).

(4) Multiple coil-kits available under ATEX, consult ASCO/JOUCOMATIC

CNOMO SOLENOID (PILOT) INTERFACE SPECIFICATIONS

pipe size	orifice size	flow coefficient Kv		operating pressure differential (bar)			type (1)	prefix optional solenoids				catalogue number	
								ATEX/CENELEC				CNOMO size 30	CNOMO size 15
								min.	max. (PS)		air (*)		
(◇)	(mm)	(m³/h)	(l/min)		~	=		CTNK	ISSC	-	CFSC		
Solenoid air pilot operated - spring return (monostable)													
1/4	6	0,75	12,5	2	10	10	01 / 03	●	-	-	●	CTNK G551A205	CFSC G551A505
1/4	6	0,75	12,5	2	10	10	02	-	○	-	-	ISSC G551A205 MO	-
3/8	12	2,49	41,5	2	10	10	01 / 03	●	-	-	●	CTNK G552A205	CFSC G552A505
3/8	12	2,49	41,5	2	10	10	02	-	○	-	-	ISSC G552A205 MO	-
1/2	13	3,15	52,5	2	10	10	01 / 03	●	-	-	●	CTNK G553A205	CFSC G553A505
1/2	13	3,15	52,5	2	10	10	02	●	○	-	-	ISSC G553A205 MO	-
Solenoid air pilot operated and return (bistable)													
1/4	6	0,75	12,5	2	10	10	01 / 03	●	-	-	●	CTNK G551A206	CFSC G551A506
1/4	6	0,75	12,5	2	10	10	02	-	○	-	-	ISSC G551A206 MO	-
3/8	12	2,49	41,5	2	10	10	01 / 03	●	-	-	●	CTNK G552A206	CFSC G552A506
3/8	12	2,49	41,5	2	10	10	02	-	○	-	-	ISSC G552A206 MO	-
1/2	13	3,15	52,5	2	10	10	01 / 03	●	-	-	●	CTNK G553A206	CFSC G553A506
1/2	13	3,15	52,5	2	10	10	02	●	○	-	-	ISSC G553A206 MO	-

● Available feature ○ Available feature in DC only (1) Refer to the dimensional drawings on page 6.

pipe size	orifice size	flow coefficient Kv		operating pressure differential (bar)			type (1)	prefix optional solenoids				catalogue number	
				min.	max. (PS)			ATEX/CENELEC				CNOMO size 30	CNOMO size 15
					air (*)			EEExd	EEExi	-	IP65		
(◇)	(mm)	(m³/h)	(l/min)	~	=		CTNK	ISSC	-	CFSC			

Solenoid air pilot operated - spring return (monostable), certified IEC 61508 Functional Safety data

1/4	6	0,75	12,5	2	10	10	01 / 03	●	-	-	●	CTNK G551A205 SL	CFSC G551A505 SL
-	-	-	-	-	-	-	-	-	-	-	-	-	-

● Available feature ○ Available feature in DC only

ADDITIONAL OPTIONS

- Other pipe threads are available on request (For NPT ANSI 1.20.3, refer to the "Pilot Valves for the Process industry" catalogue)
- Other préfixes available according to "ATEX/CENELEC, refer to the "Pilot Valves for the Process industry" catalogue
- Suffix available: **MS** (screw type manual operator, CTNK and CFSC prefixes; Not use with SL suffix); **MO** (impulse type manual operator, prefix CFSC; Use with SL suffix)
- Plug with visual indication and with peak voltage suppression or with cable length of 2m (see section 11)

INSTALLATION

- The solenoid valves can be mounted in any position without affecting operation
- It is necessary to connect pipes or fittings to the exhaust ports to protect the internal parts of the spool valve and its pneumatic operator if used outside or in harsh environments (dusts, liquids etc.)
- IEC 61508 Functional Safety (Suffix SL), permissible temperature range: -40°C to +60°C. Probability of failure, consult ASCO/JOUCOMATIC
- Threaded pipe connection identifier is G = G (ISO 228/1)
- EEx d (prefix "CTNK") enclosure is provided with a 3/4" NPT threaded entry hole (1/2" NPT (prefix "T") or M20 x 1,5 (prefix "ET") optional) and is supplied without cable gland
- Valves with suffix "SL" should be provided with of the specific exhaust protectors
- Installation/maintenance instructions are included with each valve

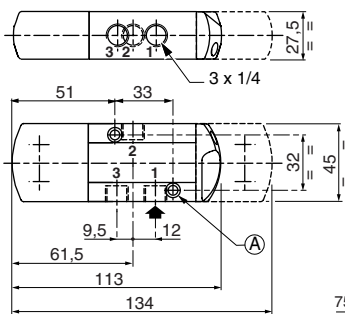
SPARE PARTS KIT & ACCESSORIES

(See page 2)

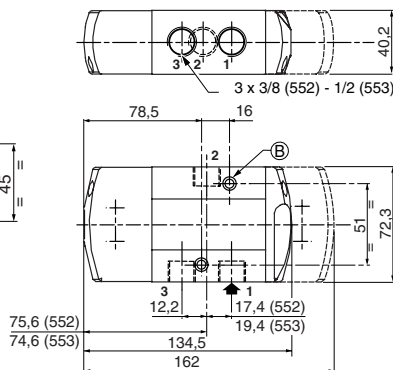
DIMENSIONS (mm), WEIGHT (kg)



Series 551

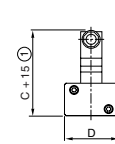
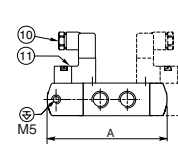
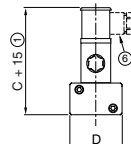
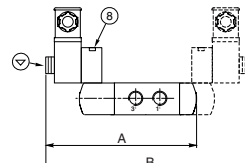
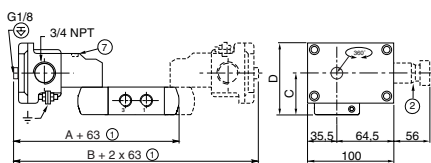
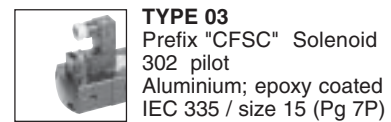


Series 552-553



(A) 2 mounting holes 5.3 mm dia.;
Spotfacing: 9 mm dia., depth 5 mm

(B) 2 mounting holes 6.5 mm dia.;
Spotfacing: 11 mm dia., depth 6 mm



(1) Incl. coil(s) and connector(s)

type	prefix option	A		B		C		D		weight (1)					
		551	552/553	551	552/553	551	552/553	551	552/553	monostable			bistable		
		551	552/553	551	552/553	551	552/553	551	552/553	551	552	553	551	552	553
01	CTNK	183	217,5	276	328	43	55,7	77	89,7	1,12	1,97	1,87	1,86	3,05	2,95
02	ISSC	146	186,5	204	266	102	111,5	45	72,3	0,59	1,44	1,34	0,80	2,52	2,42
03	CFSC	113	134,5	134	162	77,6	87,1	45	72,3	0,59	1,10	1,00	0,80	2,18	2,08

All leaflets are available on: www.ascojoucomatic.com

ASCO/JOUCOMATIC reserves the right to alter the availability, design and specifications without notice.